

Chorley
Council

Planning
Committee Meeting

19 November 2020



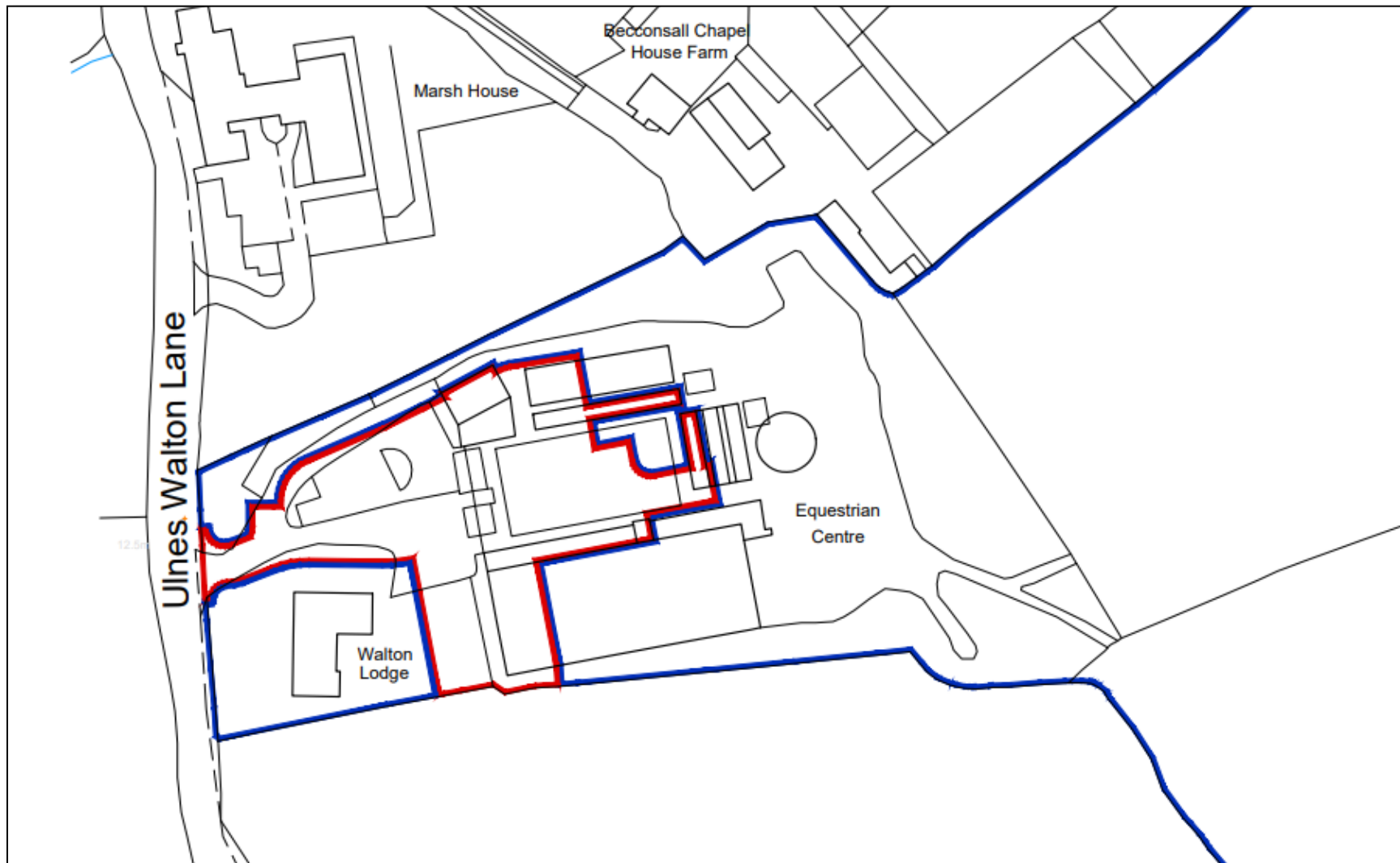
Item 3e

23/00749/REM

Ecclestone Equestrian Centre, Ulnes Walton Lane, Ulnes Walton

Application for reserved matters consent (appearance and landscaping) pursuant to outline planning permission 20/00816/OUT (Outline application for the erection of 5 dwellings including details of access, layout and scale following partial demolition of equestrian centre)

Location plan



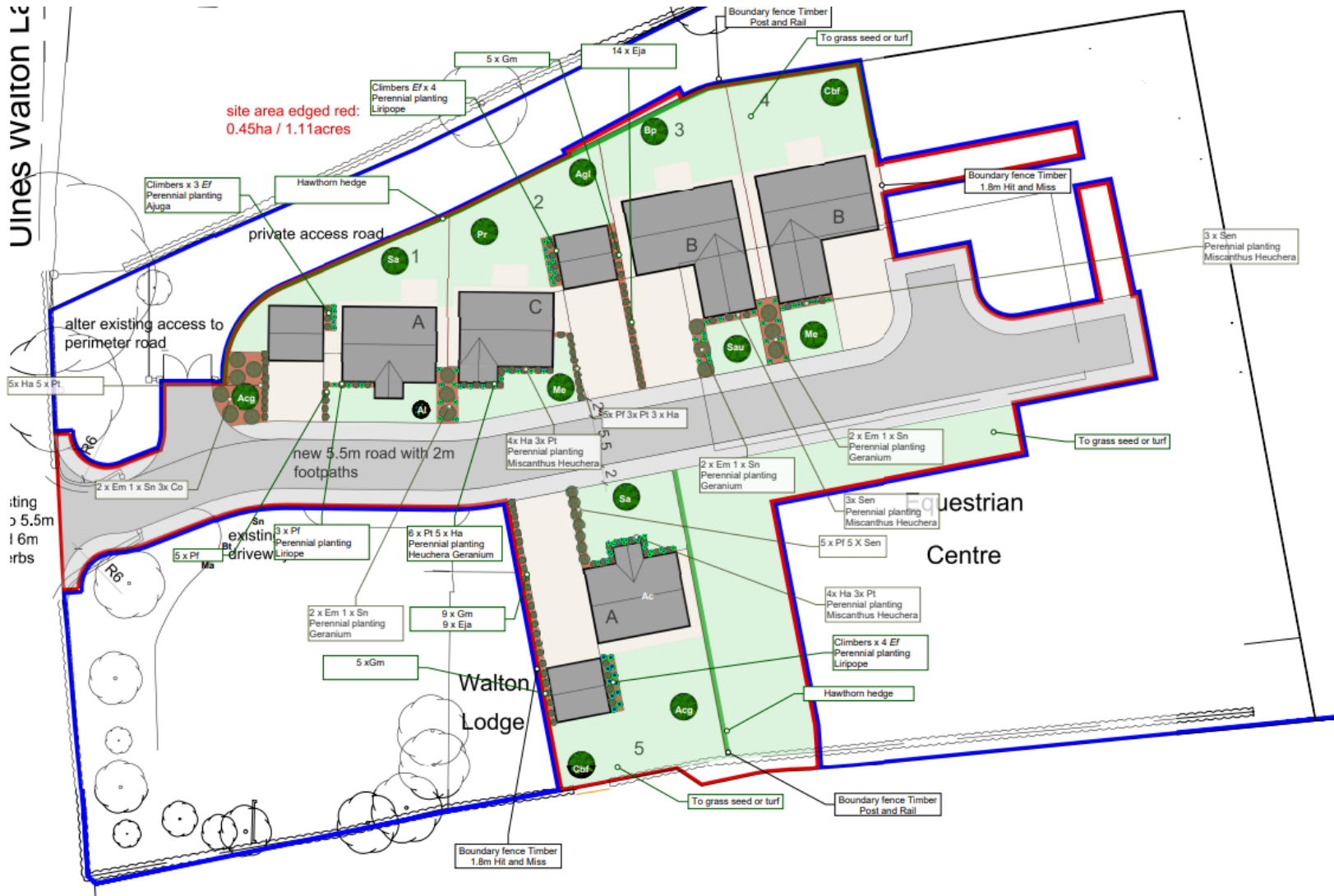
Aerial photo



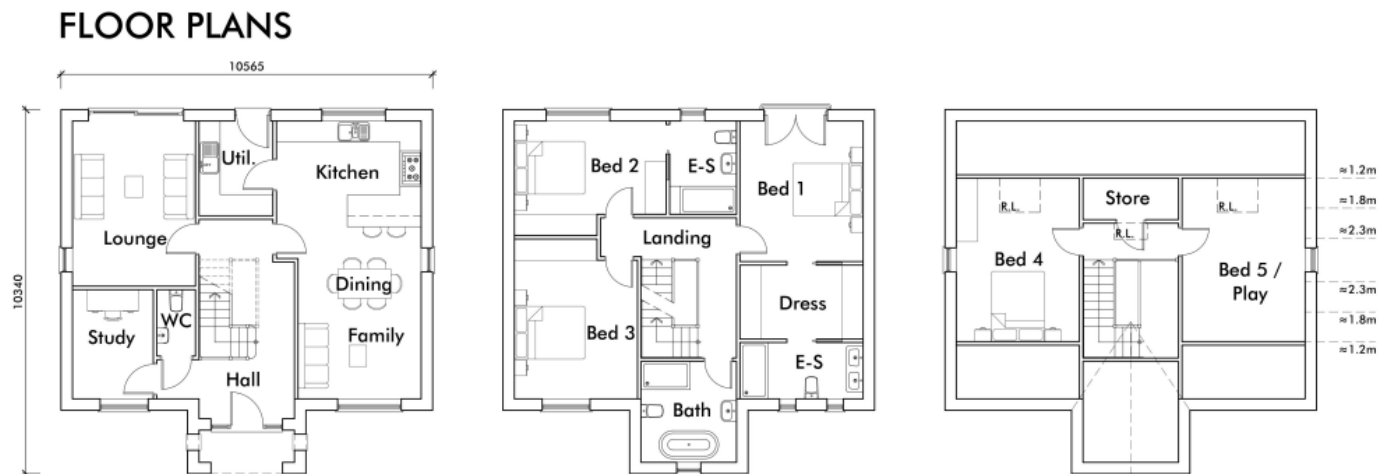
Site layout plan



Soft Landscaping plan



House type A



House type B

ELEVATIONS

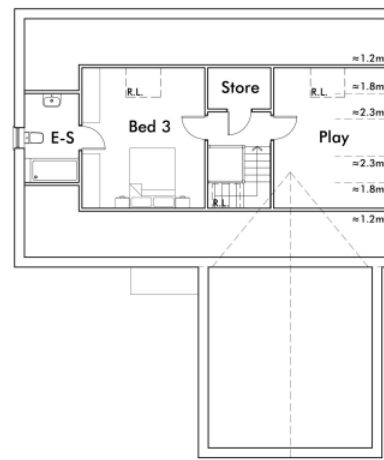
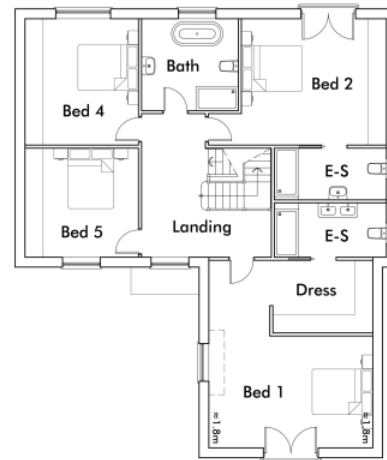
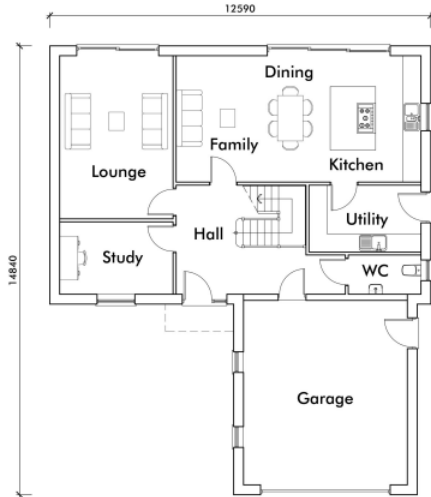


FRONT

SIDE (R)

SIDE (L)

FLOOR PLANS

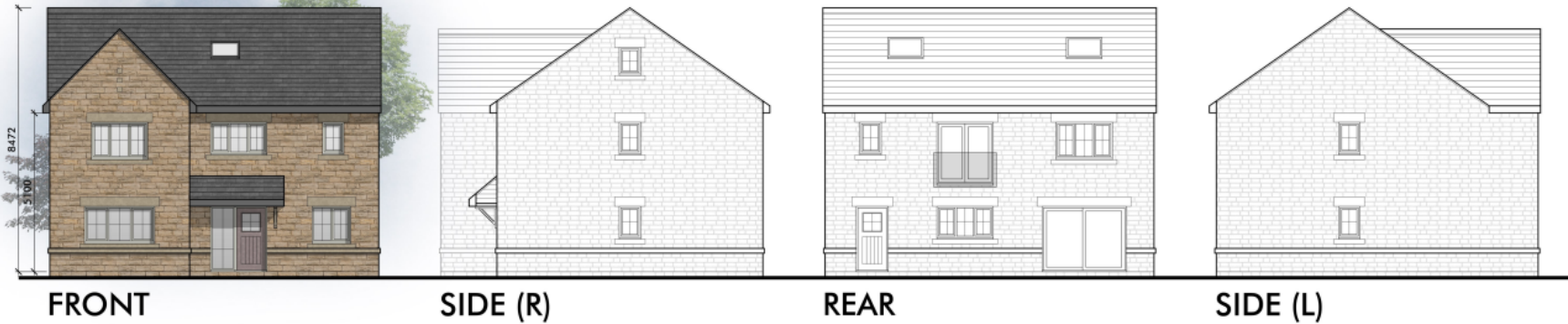


REAR

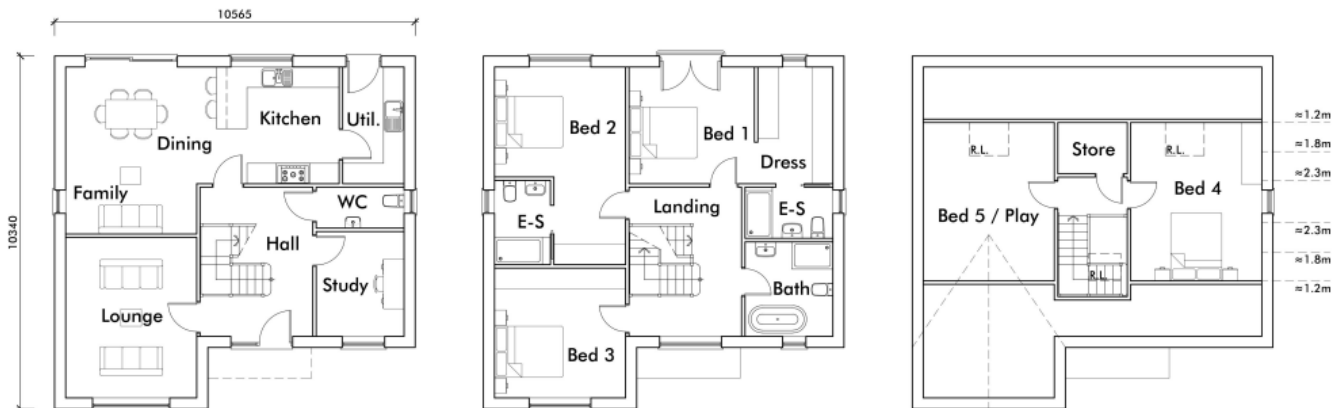
Revision Notes:

House type C

ELEVATIONS



FLOOR PLANS



Site photo



Site photo



Site photo



Site photo



Site photo



Site photo



Site entrance



Site entrance

